



# WASPSNEWS

## Little Mountains 2015 Newsletter

[www.w-a-s-p-s.com](http://www.w-a-s-p-s.com)

2015 is upon us and as I sit here it's a damp and cold 4° outside, not very appetising to go fishing. I did plan to go fishing at the weekend but when I got up there it was a bit muddy and the wind was blowing all the way down the lakes with no calm spots on the water, so I did the sensible thing of topping up the bird feeders, followed by a walk around the lakes before I got back in the car and went home and lit a log fire.

I do feel the need to go fishing but I think that with age common sense seems to prevail and if it's cold or wet then the urge to fish seems to fade a bit, oh for those lovely warm summer days.....

Hopefully it won't be long before the vegetation starts to sprout and fresh lush green leaves fill the trees.

### DAFFODILS



I cut back all the vegetation at the back of the front lake again in December once all the brush had died back, however in an effort to perk the place up for the spring I planted a sack of over 500 daffodils all along the bank. When I walked round the other day I saw that they were all sprouting along the bank so hopefully they will all be out in flower next month let us know spring is on its way.

### OOOOPS

Member Adam Roberts managed to hook himself a personal best carp from the back lake last year, however in his excitement he was suddenly brought back down to earth. He may have been good enough to hook a big fish he soon discovered that he couldn't walk on water. For in a moment of absent mindedness he proceeded to take one step too many off the front of the swim. Suddenly he proceeded to fall head first into the lake, upon surfacing he discovered that his glasses were still on, the rod was still in his hand and best of all the fish was still attached. Eventually he managed to extricate himself from the lake and landed this 18lb monster.



Fortunately Adam was not hurt during the incident although the same could not be said for his phone which was in his pocket at the time.

Steve Ellis who was fishing the front lake at the time made his way over to see Adam and took this picture of a damp Adam and his fish.

It was a good job Adam didn't get pulled over by the police on his drive home later in the day whilst only wearing his underpants after removing all of his wet clothes. "Please let me explain officer....."

### SQUATTERS/SQUARKERS

The resident squatting geese disappeared last year as suddenly as they appeared, where they went nobody knows but at least we don't have to put up with their noise and poop any more.



### REBUILDING SWIMS

Last year several of the swims on the back lake were rebuilt to make them larger, safer and more comfortable, these proved to be very popular, this year I plan to remove the scaffold platform and rebuild the swim in a similar style with sleepers at the front and side.

Over the years the tree in the corner of the front lake nearest the toilet has gradually been leaning over more

and more and before long it was going to be in the lake so I took the decision to remove the offending boughs that were leaning over the water.

A few of us got together in October and proceeded to cut back the tree, clear the area of debris etc and to create a new swim with a railway sleeper front, concrete slabs in the swim and steps and a handrail.



When the swim was completed I planted several clumps of Montbretia some Daffodils and a row of Hazelnut saplings which will hopefully create a nice screen for the years to come. The transformation of the dark corner to a open and light comfortable swim was somewhat surprising.

The name for the new swim is “Khazi Corner” for obvious reasons

### GRAPES

Some of you may have noticed the wire on the outside of the cabin and wondered why it is there, I have planted a grapevine near the front corner (one of the self set seedlings from my grapevine at home).. If it grows anything like my one at home it will end up all over the place dripping in grapes. You never know somebody one day might brew up a “Château Du Mountains”.

### PLEASE DON'T FISH IN AMONGST SNAGS

The corner swim (nearest to where the cars come up to the back lake) had a potential problem with anglers fishing tight along the bank in amongst the Lilies, in order to prevent this I therefore put a handrail along the left side of the swim to effectively block



off fishing in that direction. Guess what, the next thing I hear is that the handrail was being used as a rod rest..... FISHING TIGHT IN AMONGST THE LILLIES IS POTENTIALLY VERY DANGEROUS FOR THE FISH AS THEY ARE HIGHLY LIKELEY TO GET SNAGGED IN THE LILLIES AND END UP EITHER DYING OR INJURING THEIR MOUTHS TRYING TO FREE THEMSELVES FROM THE SNAG.

**PLEASE DO NOT FISH IN OR CLOSE TO SNAGS**

### W-A-S-P-S CLOTHING

We have a selection of polo shirts (£18) and hoodies (£30) made up bearing the club logo. Other garments such as sweat shirts or fleeces can also be ordered. Please come and see them at the shop.



### EDDIE REARDON

Sadly, former member Eddie Reardon lost his battle with leukaemia in August. He was a really nice guy and I miss our friendly banter.

### MEMBERSHIP & FEES

Following an increase in the lease there will be a nominal increase of £2 to the ADULT membership. Membership numbers are strictly limited and we now have several people waiting to join if a vacancy arises.

As I have to pay the lease in April the membership places are conditional on the renewal date. If anyone fails to renew by the 1st April their membership place will be offered to people on the waiting list

- Single ADULT membership will be £52 per season.
- Family membership will be £78 per season.
- Daily guest permits will remain at £5 per day.

Membership places are limited and renewal is available at the shop now, your current membership expires on 31st March after which it may be offered to the next person on the waiting list .

### LAKE CLOSED

Following a request from our landlord please note that the lake is to be closed and OUT OF BOUNDS for **Christmas Day and Boxing day every year.**

The lake is also closed on the LAST SUNDAY IN MARCH for the annual work party where only attendees of the work party may fish after the work party finishes.



I have created a FACEBOOK page to keep members updated and to allow members to share info and pictures of captures. Unfortunately not many members currently access the page often because of misguided apprehension about facebook. A lot of people are wary about facebook as they believe that it shares too much information, to register all you need to enter is Your Name, Age,, Gender and email address. It is very simple to use and it is up to you what you see and who can see your profile. Trust me, it is a very safe and simple facility. If you have a smart phone you can even update your catches from the lake.

Try it, register and if you don't like it de-register and close your account, simple, I can assure you that it is the easiest way to keep up to date with what is happening at the lake etc. If you need a hand give me a call.

**WEBSITE**

We have a website [www.w-a-s-p-s.com](http://www.w-a-s-p-s.com) where all the information about the club can be found

**LOST and FOUND**

If you lose or find anything please contact me or put a note on the Notice Board in the cabin or on our facebook page.

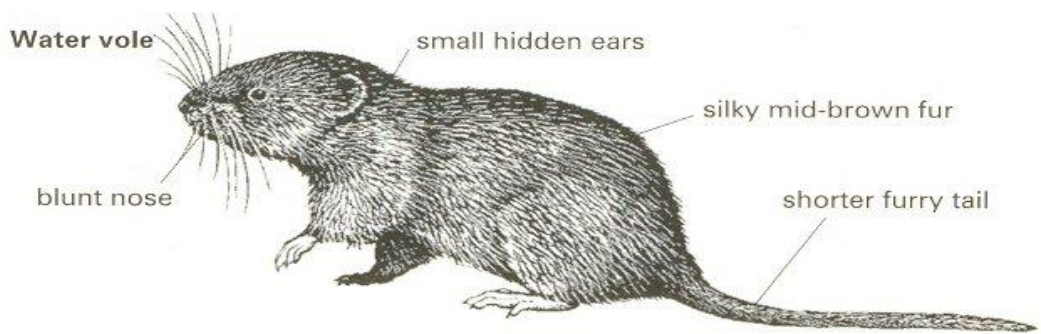
**W-A-S-P-S**

W-A-S-P-S was originally named as Witham Angling Society Police Section, however when the last of the police anglers retired it was simply shortened to W-A-S-P-S,. However last year as I sat by the lake relaxing, a new meaning of the abbreviation came to mind. Witham Angling Sanctuary for Piscatorial Studies, just about sums it up.

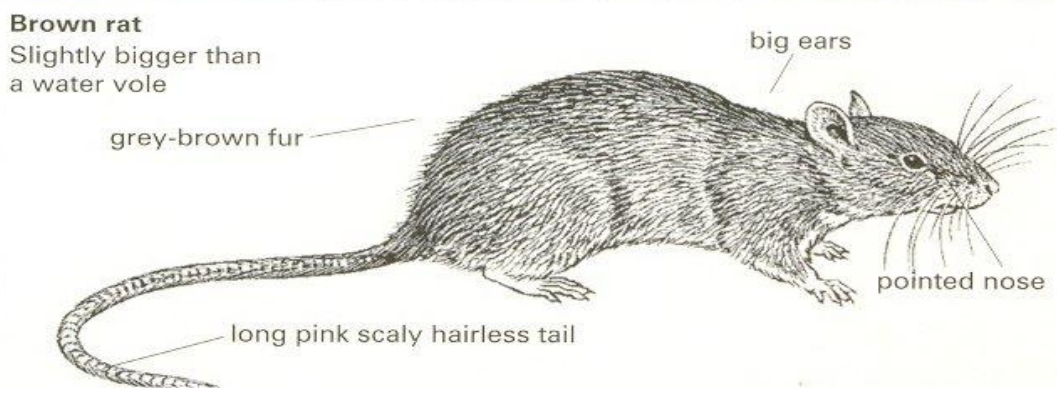
**ROLLAND OR RATTY**

Following the harvest last year there was a significant increase in sightings of rats at the lakes, (although they seem to have disappeared now that the cold weather is upon us.) however we must be careful not to confuse them with water voles or water voles which are protected.

If its ears are smaller and it has a furry tail it is a water vole and should not be harmed or disturbed, however if its tail is hairless then that is a different matter...



**Water voles can be confused with brown rats which are often found near water.**



**RUBBISH**

Whilst clearing the scrub from the back of the front reservoir I found a sweetcorn tin and Catfish pellet box hidden in the bushes near the Owl swim, it was only a small amount but its something we don't normally find (or accept) therefore if you are the person who left it please do not renew your membership this year-



WE DON'T NEED ARSEHOLES.

**WORK PARTY**

This years work party will be held on Sunday 29th March running from 9am til lunchtime. The lakes will be CLOSED for the work party but may be fished by attendees after the work party has ended.

**WANTED**

- If anyone has any of the following that they no longer require please let me know :
- Scaffold poles
- Angle Iron (even old bed frames)
- Railway Sleepers
- Posts
- Sand, Gravel , Shingle, Pebbles.
- Or anything that you think may come in handy.

## TOPSOIL WANTED

Some of the laurel plants at the right of the far top hedge are very stunted probably due to poor soil, I have been growing some replacement cuttings at home which are now ready for transplanting, however in order to give them a better chance I want to dig some larger holes and fill them with better quality soil/compost. If anyone has any surplus topsoil even if it's a couple of buckets full please let me know.

## RESERVOIR MAP

I have now updated the Reservoir Map showing swim names and parking locations. This has been posted on the Notice Board and can be viewed or downloaded from the website [www.w-a-s-p-s.com/pdf/mountains\\_map.pdf](http://www.w-a-s-p-s.com/pdf/mountains_map.pdf) either follow the link or go to the Little Mountains page on the website and download the map. A copy of this map is attached to the end of the newsletter.

## TRESSPASSERS

It would appear that some wandering pond life is not satisfied with being given a wood to walk in and likes to climb over the ditch and flatten the farmers (our landlords) fence. Last year in an effort to stop them I placed some blackthorn branches in the affected area but I noticed recently it has been removed and the fence flattened. On the work Party I hope to replace the poles, repair the fence and add some more blackthorn.....

This area is about 20 yards up from the toilet so I would ask all members to be vigilant about anyone crossing the fence from the wood..

## ACCESS & PARKING

We have a one way system so that access to the back reservoir is via the far entrance slope and exit via the slope between the two reservoirs (**STRICTLY ONE WAY, MEMBERS MUST NOT DRIVE UP THE EXIT SLOPE OR DOWN THE ENTRANCE SLOPE**).

We have several lay-by style parking places at the rear of the front reservoir to allow members to park in their swim, however anyone using these parking places is to ensure that their vehicles are tucked right in to allow other cars to drive past.

**PARKING IS NOT PERMITTED ON THE ACCESS TRACK AROUND THE REAR RESERVOIR EXCEPT IN THE DESIGNATED PARKING AREAS.**

## COMMON SENSE RULE

If the "Road Closed" sign is up or in wet weather please to not drive past the sign or around to the back reservoir.



## 5mph SPEED LIMIT

For safety and to prevent track erosion please can members not exceed **5mph** when driving at the venue

## DRIVING HOURS

To prevent disturbing local residents, driving down the access track is only permitted at the following times.

6am til 10pm April-September

Dawn Til Dusk October-March

## PLEASE PARK ON THE HARD STUFF

When the ground is wet please try and park on the harder areas and avoid creating ruts, if you do make a rut please can you fill it with the bricks etc.

## PLEASE KEEP OF THE GRASS

The access track leading to the reservoir has been significantly repaired over the last few years, so in an effort to protect the access can all members please keep to the track. and not drive on the grass. **Despite numerous requests we still unfortunately have somebody who regularly drives "off road" as I often see where they have driven on the grass on the track leading to the reservoirs, hopefully I will catch them one day and we will have one less member.**

## I'LL BE BACK

I have not been up at the lakes as much over the last year due to finishing my extension, rebuilding the greenhouse, aviary and ponds, however I hope to be back up to full speed this forthcoming season and hopefully I will get a lot more fishing in.

## A BIG THANKYOU

You are all a credit to the sport and I am please to have such a friendly group of members in the club who all contribute to such a pleasant and happy atmosphere at the lakes.

A big thankyou to everyone who has made efforts, contributions, donations etc this season there have been so many that I will not try to name everyone for fear of forgetting somebody and causing offence. I really appreciate the help and efforts

I am sure you will all join me in thanks to John Brench (our bailiff) who once again has worked tirelessly throughout the year to keep our little venue special.

## FINALLY

I hope you all enjoyed fishing at our friendly little club this this season and I hope that you have a successful forthcoming season and enjoy your fishing. I look forward to seeing you in the shop or at the reservoirs.

Tight Lines

# Little Mountains Reservoirs Map



**KEY:**      Yellow Dots = Swims      Red Dots = Parking Places      Blue Arrows = One Way

## Bottom Reservoir Swims

- |                 |                 |
|-----------------|-----------------|
| 1. Grotto       | 9. Ritchie II   |
| 2. Drain Pipe   | 10. Ritchie I   |
| 3. The Owl      | 11. Harold's    |
| 4. The Deep     | 12. Lifebuoy    |
| 5. Pear Tree    | 13. Oak Tree    |
| 6. Shed Swim    | 14. Apple Tree  |
| 7. Bench Swim   | 15. Jack Horner |
| 8. Khazi Corner |                 |

## Top Reservoir Swims

- |                         |                        |
|-------------------------|------------------------|
| 16. First Swim          | 25. Hole in the Corner |
| 17. Top Lifebuoy        | 26. Gap in the Trees   |
| 18. Silver Birch        | 27. The Stump          |
| 19. The Pinch           | 28. Middle Lifebuoy    |
| 20. Bullrushes          | 29. The Overflow Pipe  |
| 21. Little Oak          | 30. Next to the Reeds  |
| 22. The Jetty           | 31. Maple Tree         |
| 23. Comfy Swim          | 32. Middle if the Dam  |
| 24. Top Reservoir Bench | 33. Top Left Corner    |