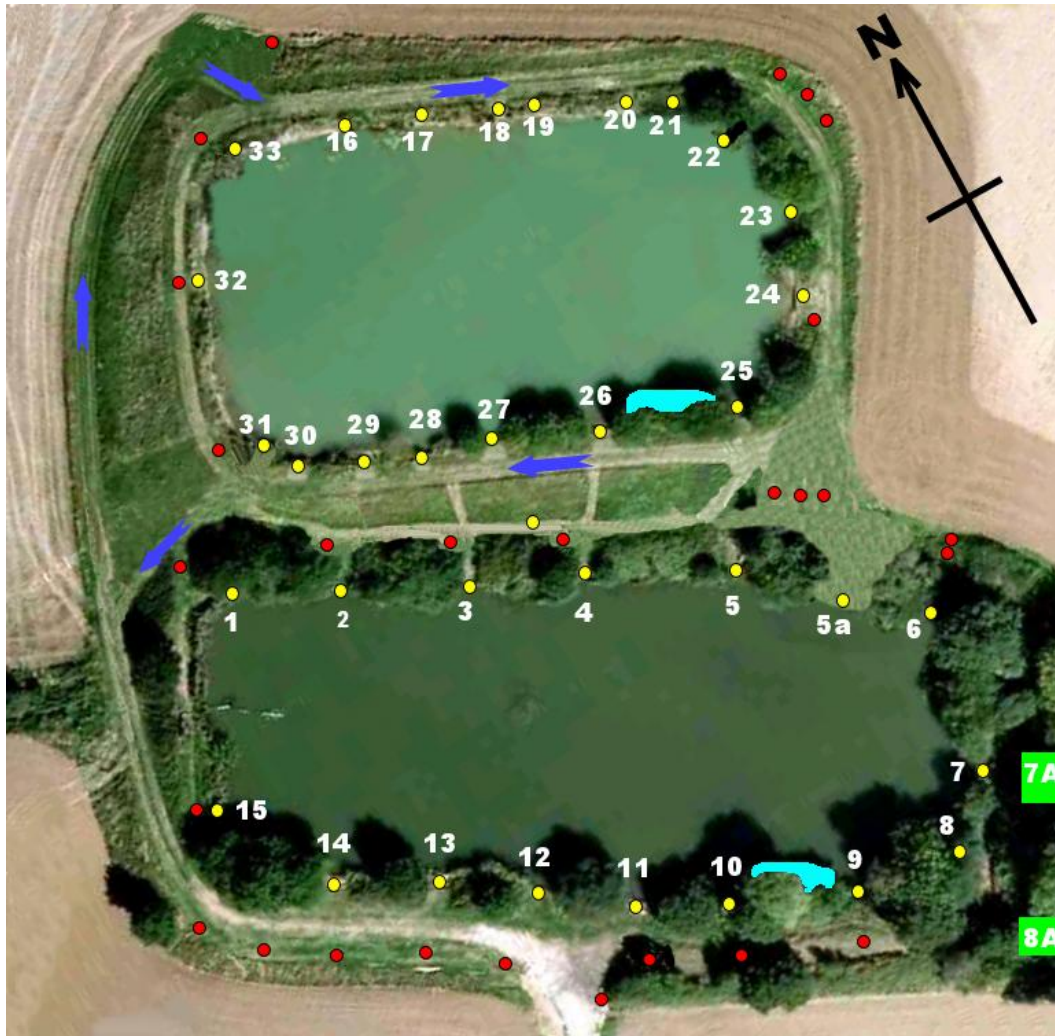


Little Mountains Reservoirs Map



KEY: Yellow Dots = Swims Red Dots = Parking Places Blue Arrows = One Way
 Aqua = Fish Refuge Green 7A = Cabin Green 8A = Toilet

Bottom Reservoir Swims

- | | |
|------------------|-----------------|
| 1. Grotto | 8. Khazi Corner |
| 2. Drain Pipe | 9. Ritchie II |
| 3. The Owl | 10. Ritchie I |
| 4. The Deep | 11. Harold's |
| 5. Pear Tree | 12. Lifebuoy |
| 5a Primrose Hill | 13. Oak Tree |
| 6. Shed Swim | 14. Apple Tree |
| 7. Bench Swim | 15. Jack Horner |

Top Reservoir Swims

- | | |
|------------------|------------------------|
| 16. Vicious Rose | 25. Hole in the Corner |
| 17. Top Lifebuoy | 26. Gap in the Trees |
| 19. The Pinch | 28. Middle Lifebuoy |
| 18. Silver Birch | 27. The Stump |
| 20. Bullrushes | 29. The Overflow Pipe |
| 121. Little Oak | 30. Gap in the Reeds |
| 22. Top Right | 31. Maple Tree |
| 23. Comfy Swim | 32. Middle if the Dam |
| 24. Johns Bench | 33. Top Left Corner |